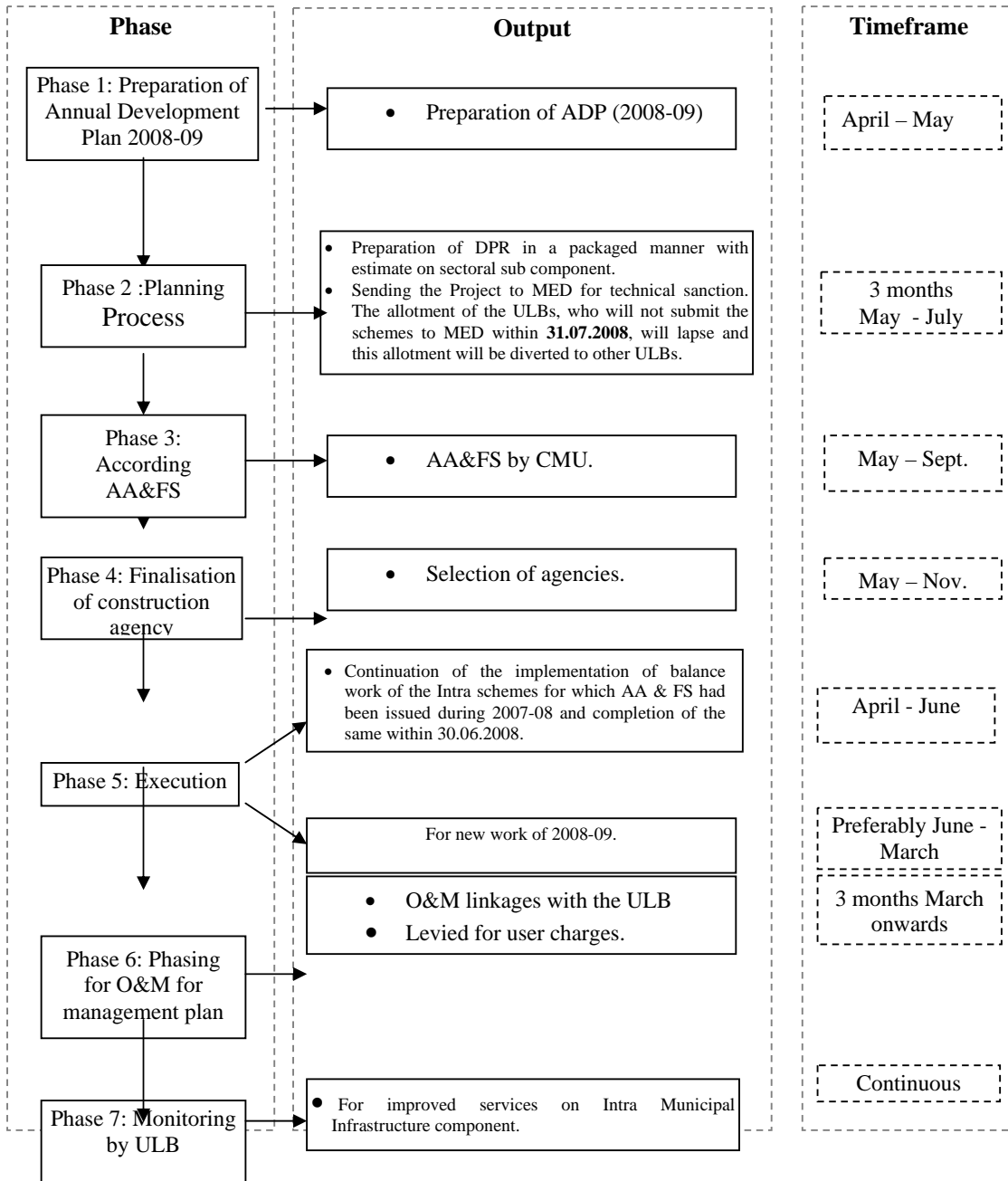


1. : PROCESS FLOW DIAGRAM: IMPLEMENTATION OF INTRA MUNICIPAL INFRASTRUCTURE WORK (2008-09)



Each phase may over lap other.

Operation and Maintenance Plan of Proposed Intra Municipal Infrastructure Work under KUSP during 2008-09

Name of ULB :

Name of Work :

Sl. No.	Item	* Who will be responsible for (2)	* Recurrence of Operation	Total	Likely cost per month	* How the cost will be met	*If it is charged, how it will be collected
(1)	(2)	(3)	(4)	(5)	(6)	(7)	(8)
(A)	Sewerage & Drainage						
1	Maintenance of Pump house, pumping machineries	ULB conservancy staff / person engaged on contract by ULB	As and when required (Nos.)	Rs.	From ULB fund / user charge based	--
2	Maintenance of Drains	ULB	As and when required (Mtr.)	Rs.	From ULB fund / user charge based	---
3	Maintenance of Sewer line	ULB conservancy staff	As and when required (Mtr.)	Rs.	From ULB fund / user charge based	---
(B)	Water Supply related jobs						
1.	Maintenance of Big dia tube well	ULB	As and when required (Nos.)	Rs.	From ULB fund / user charge based	----

** Please put \checkmark mark against the system the ULB would like to follow*

Sl. No.	Item	* Who will be responsible for (2)	* Recurrence of Operation	Total	Likely cost per month	* How the cost will be met	**If it is charged, how it will be collected
(1)	(2)	(3)	(4)	(5)	(6)	(7)	(8)
2.	Maintenance of Head works	ULB	As and when required (Nos.)	Rs.	From ULB fund / user charge based	---
3.	Maintenance of distribution network	ULB	As and when required (Mtr.)	Rs.	From ULB fund / user charge based	---
4.	Maintenance of PSP	ULB / any other organisation	As and when required (Nos.)	Rs.	From ULB fund / user charge based	---
(C)	Solid Waste Management						
1.	Maintenance of Solid Waste Management (door to door collection) in places where it exists	ULB conservancy staff / person engaged on contract by ULB	Daily (No. of Houses Covered)	Rs.	From ULB fund / user charge based	----

** Please put ✓ mark against the system the ULB would like to follow*

Sl. No.	Item	* Who will be responsible for (2)	* Recurrence of Operation	Total	Likely cost per month	* How the cost will be met	**If it is charged, how it will be collected
(1)	(2)	(3)	(4)	(5)	(6)	(7)	(8)
2.	Transport from container / trailer to dumping / composting ground in places where it exists	ULB / any other organisation	Daily / twice in a week (No. of Houses Covered)	Rs.	From ULB fund / user charge based	---
3.	Campaign for generation of awareness building among users	ULB / any other contracted organisation	Once in a week / fortnight / months		Rs.	From ULB fund / user charge based	---
4.	Maintenance of treatment facility	ULB / any other contracted organisation	Regular		Rs.	From ULB fund / user charge based	---
(D)	Road infrastructure						
1.	Maintenance of Bituminous Road	ULB	As and when required (Mtr.)	Rs.	From ULB fund / user charge based	---
2.	Maintenance of concrete Road	ULB	As and when required (Mtr.)	Rs.	From ULB fund / user charge based	---

** Please put \checkmark mark against the system the ULB would like to follow*

Sl. No.	Item	* Who will be responsible for (2)	* Recurrence of Operation	Total	Likely cost per month	* How the cost will be met	* *If it is charged, how it will be collected
(1)	(2)	(3)	(4)	(5)	(6)	(7)	(8)
(E)	Street lighting						
1.	Maintenance of street lighting system including replacement of luminaries	ULB	As and when required (No.)	Rs.	From ULB fund / user charge based	--
(F)	Maintenance of building						
1.	Preventive maintenance	ULB	Regular		Rs.	From ULB fund	--
2.	Breakdown maintenance	ULB / any other contracted organisation	As and when required		Rs.	From ULB fund	---
(G)	Environmental Improvement						
1.	Project having Environmental improvement theme i.e.(wet land management, development of park & play ground	ULB / any other contracted organisation	As per plan (No.)	Rs.	From ULB / PPP Mode	---
2.	Environmental monitoring practices	ULB / any other contracted organisation	As per plan (No.)	Rs.	From ULB fund	--

We agree to implement the above plan as per responsibilities allocated.

Engineer of ULB

Mayor / Chairperson of ULB

